


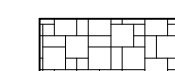

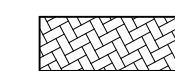


BEGIN MILLBURY IMPROVEMENTS PROJECT

STA. 100+00
N: 2894021.23
E: 584520.02

LEGEND:

-  CONCRETE DRIVEWAY
-  FULL DEPTH RECONSTRUCTION
-  CONCRETE SIDEWALK
-  CONCRETE PAVERS
-  20" POROUS PAVER EDGING
-  STAMPED CONCRETE

ELM STREET BASELINE

CURVE NO.	STATION	NORTHING	EASTING	Δ	RADIUS	TANGENT	LENGTH
C1	PC	102+01.63	2894157.15	584668.96	N43° 15' 40.24"E	1200.0'	91.38'
	PI	103+84.04	2894218.75	584736.46			
	PT	107+78.53	2894289.87	584793.85			
C2	PC	104+47.10	2894338.93	584833.45	N48° 24' 04.25"E	1000.0'	167.25'
	PI	107+78.53	2894460.08	584938.49			
	PT	107+78.53	2894557.97	585080.16			
C3	PC	109+09.06	2894627.34	585190.74	N59° 18' 22.99"E	3000.0'	73.86'
	PI	110+56.76	2894666.59	585253.31			
	PT	110+56.76	2894702.72	585317.73			

RIVER STREET BASELINE

CURVE NO.	STATION	NORTHING	EASTING	Δ	RADIUS	TANGENT	LENGTH
C4	PC	401+08.33	2894156.84	584517.99	S45° 32' 07.23"E	600.0'	33.03'
	PI	401+74.33	2894135.04	584542.80			
	PT	401+74.33	2894110.64	584565.07			

WATER STREET BASELINE

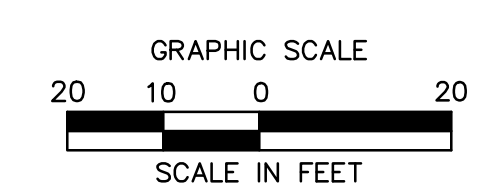
CURVE NO.	STATION	NORTHING	EASTING	Δ	RADIUS	TANGENT	LENGTH
C5	PC	300+64.37	2894404.08	584780.16	S34° 11' 57.81"E	100.0'	22.22'
	PI	301+08.11	2894383.43	584788.36			
	PT	301+08.11	2894368.20	584804.55			

PARKING TABLE ON STREET

EXISTING	PROPOSED	GAIN/LOSS
38	40	+2

NOTES:

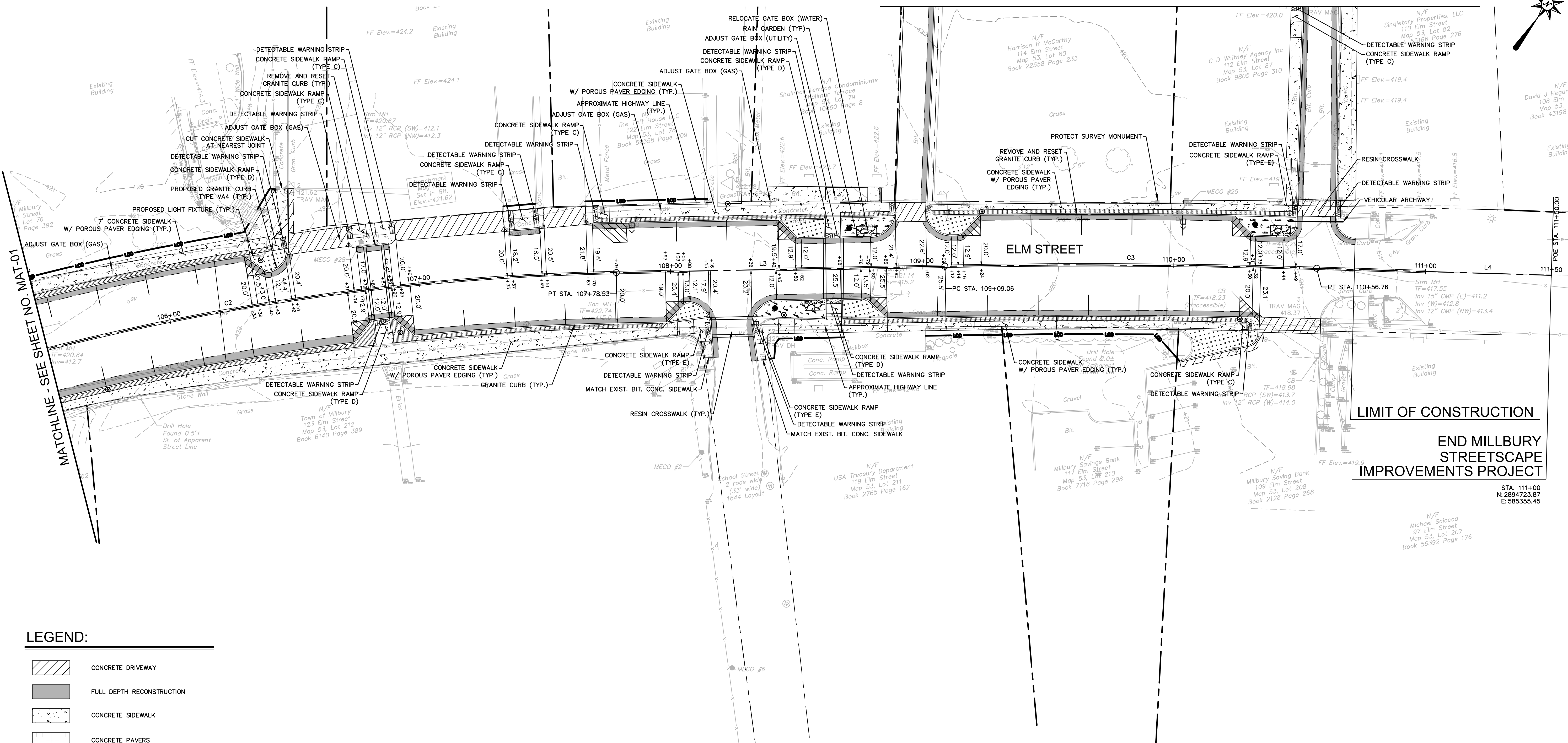
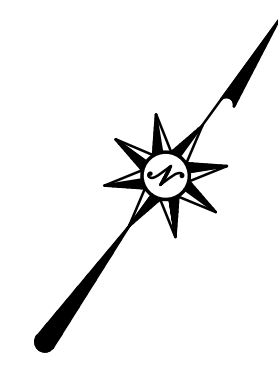
- DETECTABLE WARNING STRIPS ARE TO BE INSTALLED ON CONCRETE SIDEWALK RAMPS ONLY WHERE INDICATED ON THE PLANS OR AS DIRECTED BY THE ENGINEER.
- A 4' MINIMUM ACCESSIBLE PATH SHALL BE PROVIDED DURING CONSTRUCTION IN ALL AREAS WHERE EXISTING SIDEWALK IS BEING RECONSTRUCTED.



LIMIT OF CONSTRUCTION
STA. 200+00

3/17/2021, 10:45:00 AM, I:\COMPANIES\COMPUTERS\PROJ\020021\LA001\REV\DWG\MAT20047801.DWG (MATT)

MATCHLINE - SEE SHEET NO. MAT-03



LEGEND:

	CONCRETE DRIVEWAY
	FULL DEPTH RECONSTRUCTION
	CONCRETE SIDEWALK
	CONCRETE PAVERS
	20" POROUS PAVER EDGING
	STAMPED CONCRETE

ELM STREET BASELINE

CURVE NO.	STATION	NORTHING	EASTING	Δ	RADIUS	TANGENT	LENGTH
C1	PC 102+01.63	2894157.15	584668.96	N43° 15' 40.24"E	1200.0'	91.38'	182.4'
	PI 103+84.04	2894218.75	584736.46				
	PT 2894289.87	584793.85					
C2	PC 104+47.10	2894338.93	584833.45	N48° 24' 04.25"E	1000.0'	167.25'	331.4'
	PI 107+78.53	2894469.08	584938.49				
	PT 2894557.97	585080.16					
C3	PC 109+09.06	2894627.34	585190.74	N59° 18' 22.99"E	3000.0'	73.86'	147.7'
	PI 2894666.59	585253.31					
	PT 110+56.76	2894702.72	585317.73				

RIVER STREET BASELINE

CURVE NO.	STATION	NORTHING	EASTING	Δ	RADIUS	TANGENT	LENGTH
C4	PC 401+08.33	2894156.84	584517.99	S45° 32' 07.23"E	600.0'	33.03'	66.0'
	PI 2894135.04	584542.80					
	PT 2894110.64	584565.07					

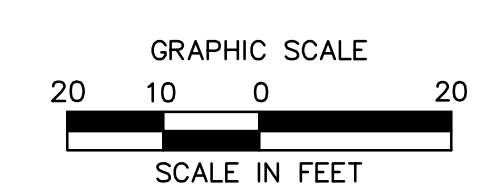
WATER STREET BASELINE

CURVE NO.	STATION	NORTHING	EASTING	Δ	RADIUS	TANGENT	LENGTH
C5	PC 300+64.37	2894404.08	584780.16	S34° 11' 57.81"E	100.0'	22.22'	43.7'
	PI 2894383.43	584788.36					
	PT 301+08.11	2894368.20	584804.55				

PARKING TABLE ON STREET

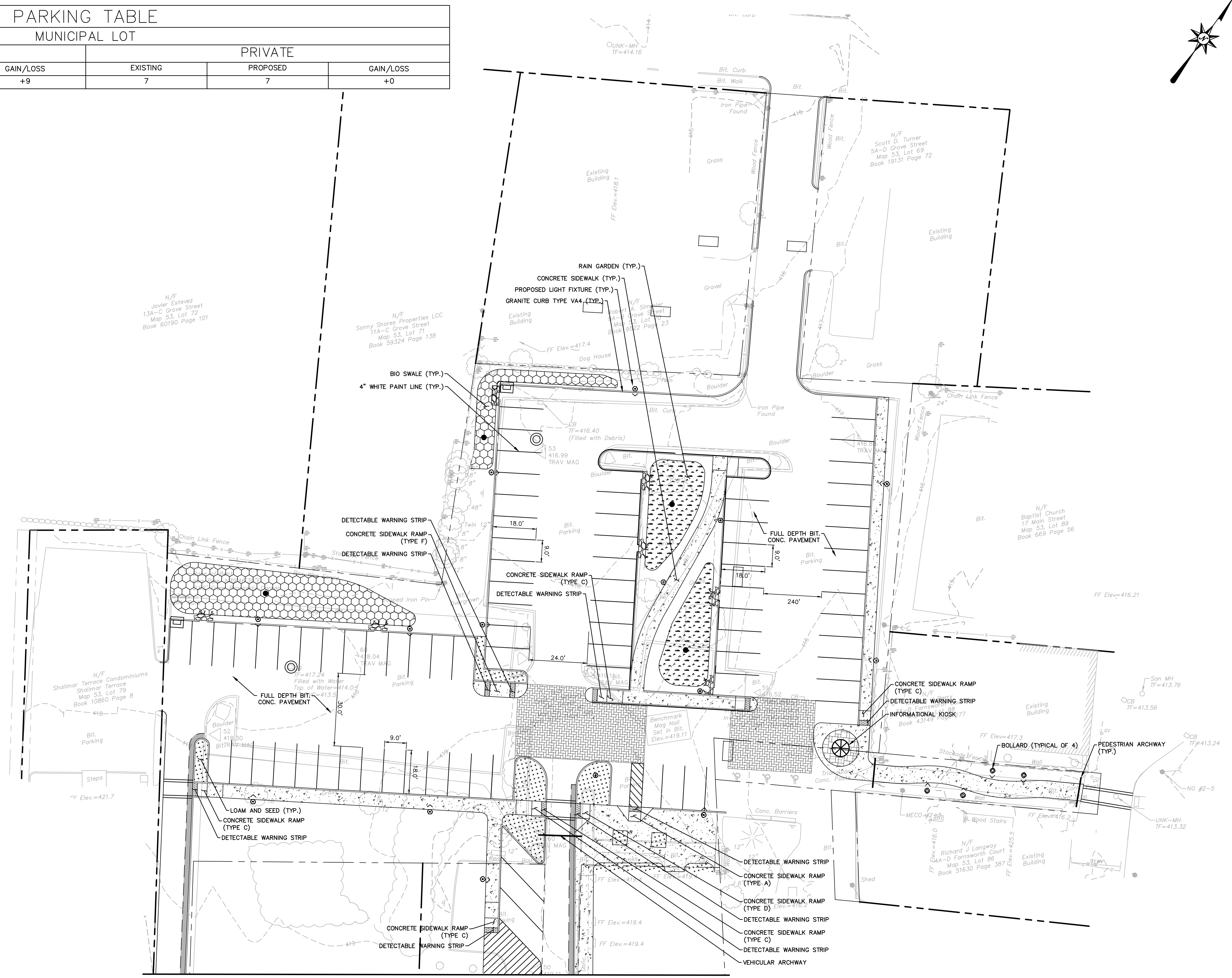
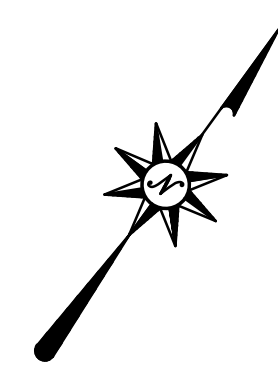
EXISTING	PROPOSED	GAIN/LOSS
38	40	+2

- NOTES:**
- DETECTABLE WARNING STRIPS ARE TO BE INSTALLED ON CONCRETE SIDEWALK RAMP ONLY WHERE INDICATED ON THE PLANS OR AS DIRECTED BY THE ENGINEER.
 - A 4' MINIMUM ACCESSIBLE PATH SHALL BE PROVIDED DURING CONSTRUCTION IN ALL AREAS WHERE EXISTING SIDEWALK IS BEING RECONSTRUCTED.



3/17/2021, 10:45:00 AM, I:\COMPANIES\COM\DESIGN\PROJECTS\140001\REVISED\MAT20047801\DWG\MAT-02.DWG

PARKING TABLE					
PUBLIC MUNICIPAL LOT			PRIVATE		
EXISTING	PROPOSED	GAIN/LOSS	EXISTING	PROPOSED	GAIN/LOSS
70	79	+9	7	7	+0

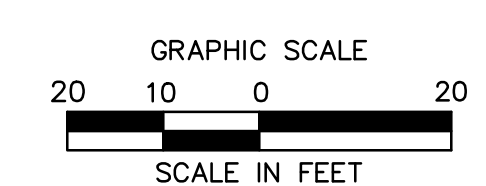


LEGEND:

	CONCRETE DRIVEWAY
	FULL DEPTH RECONSTRUCTION
	CONCRETE SIDEWALK
	CONCRETE PAVERS
	20\"/>
	STAMPED CONCRETE

- NOTES:**
1. DETECTABLE WARNING STRIPS ARE TO BE INSTALLED ON CONCRETE SIDEWALK RAMPS ONLY WHERE INDICATED ON THE PLANS OR AS DIRECTED BY THE ENGINEER.
 2. A 4\"/>

MATCHLINE - SEE SHEET NO. MAT-02



REVISIONS

No.	Date	Desc.

Designed M.M.
Drawn B.C.T.
Reviewed N.R.G.
Scale 1" = 20'
Project No. 2001478
Date March 17, 2021
CAD File: MAT20047801

Title
MATERIALS PLAN

Sheet No.

3/17/2021, 10:45:00 AM, I:\COMPANIES\COMPUTERS\PROJ\2021\1478\DWG\MAT20047801.DWG