



65 Network Drive
 Burlington, MA 01803
 Phone (781)-221-1000
 FAX (781) 229-1115

City/State: Millbury, MA
 Engineer: J.M. Grenier Associates
 Sub-Contractor:
 Project: 1 Canal Street (No. 179410991)

Site Inspection Report

Date: Monday, November 23, 2020
 Weather: 20s°, Sunny

Contractor’s Equipment: Mini Excavator

Contractor’s Personnel: John Grenier,
 Stantec Personnel: Joe Graham

1. General Site Observations:

- The site had several monitoring wells that have been placed as part of the proposed development.
- The site appeared to be an old mill building location where unsuitable soils should be anticipated.

2. Test Pit #1.:



4FT X 8FT 10FT DEEP	
Depth(FT)	Description
Ground	
90"	Fill – granite blocks and concrete fragments
113" GW Bottom 120"	C layer Coarse Sand and Gravel

Groundwater was observed at static at 113" . encountered broken up concrete , granite blocks and dark fill material. No redox was observed as the upper fill layer was dark black.

3. Test Pit #2.:



3FT X 6FT 8FT DEEP	
Depth(FT)	Description
Ground	
70" GW	Fill – granite blocks and concrete fragments
Bottom 96"	C layer Sandy loam w/ 15% cobbles Slight redox features visible at interface of fill layer 7.5 YR 6/4 with redox features of 7.5YR 5/6

Groundwater assumed at the bottom of fill layer 70" below existing ground

4. Test Pit #3.:



8FT X 5FT 10FT DEEP	
Depth(FT)	Description
Ground	
70"	Fill – granite blocks and concrete fragments
Bottom 108" GW	C layer fine grain sandy loam w/ cobbles Slight redox – 7.5YR 6/6 with redox of 7.5YR 5/8

During the test pit, a concrete slab was encountered. Note the irregular "L-shape" test pit in the photo.

5. Test Pit #4.:

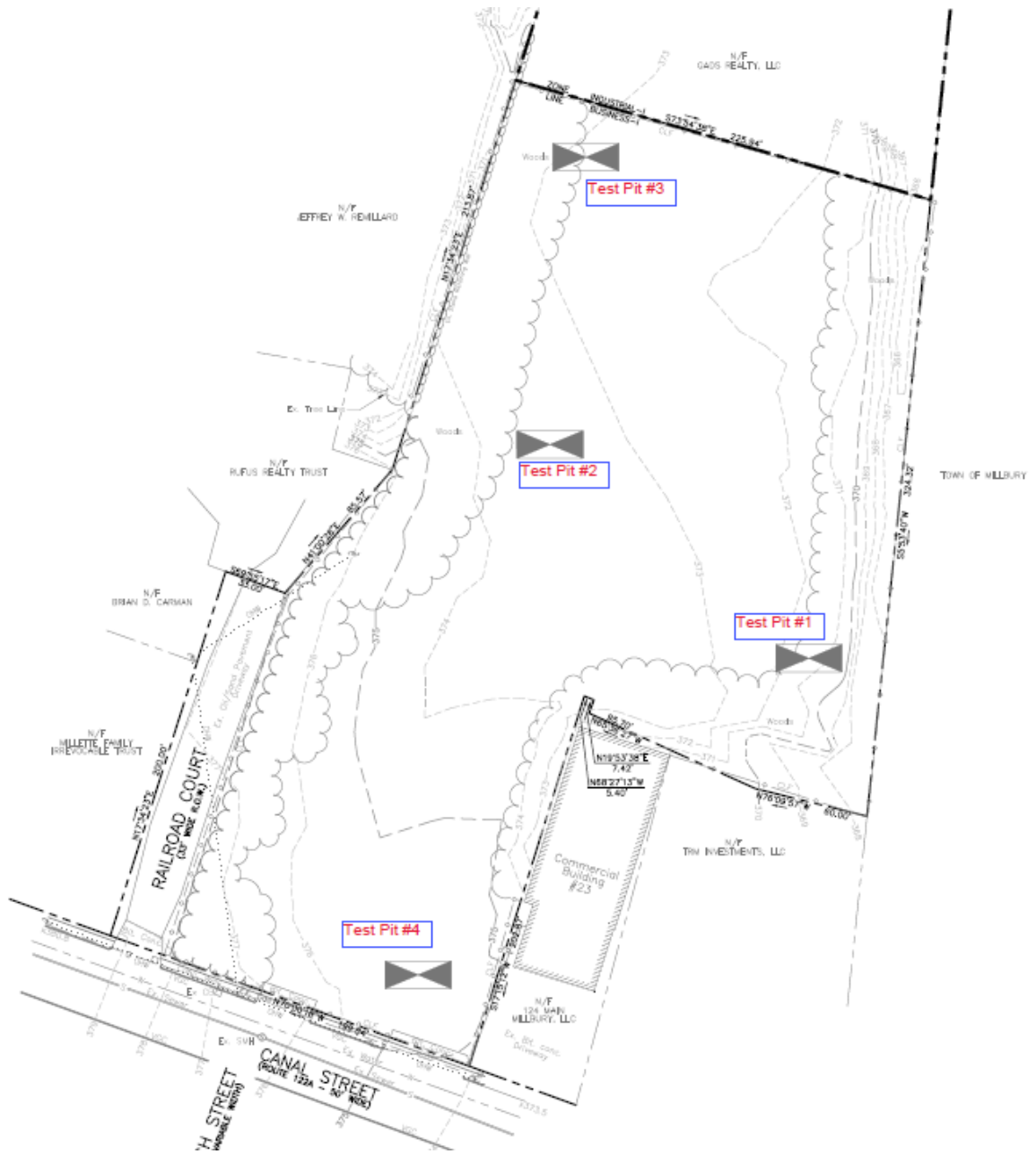


5FT X 5FT 8FT DEEP	
Depth(FT)	Description
Ground	
80"	<u>Fill</u> – granite blocks and concrete fragments <div style="text-align: center;">▼ GW</div>
Bottom 96"	<u>C layer fine to medium sand with trace cobbles.</u>

Groundwater no encountered. Slight redox features were observed at the bottom of fill however it was hard to distinguish color due to the dark fill material and debris removed during excavation.

By: Joe Graham (Stantec)

Joe Graham



TEST PIT LOCATION MAP